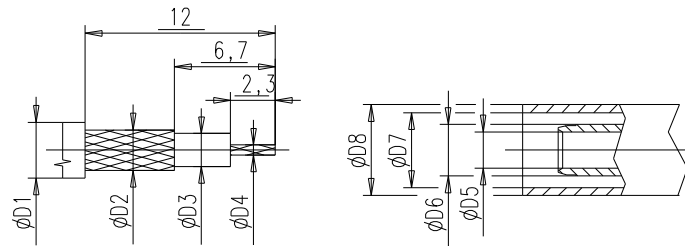


Position Schrumpfschlauch nur wenn IP-67 gefordert ist.
Position heat shrink tube, only when IP-67 is required.

IP-67 kann nur erreicht werden, wenn:
1.) Im gesteckten Zustand!
2.) Mit selbstklebendem Schrumpfschlauch.
3.) Schrumpfschlauch muss in position sein.

IP-67 can only reached, when:
1.) In connected condition.
2.) With self-adhesive heat shrink tube
3.) Attention position of the heat shrink tube

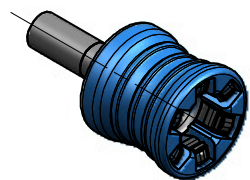
Kabelzuschnitt
Stripping dimension



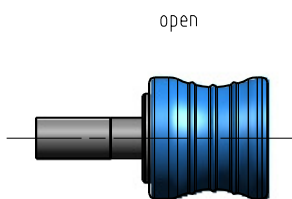
Colour code X	C	D	G
Colour	Capri blue	Bordeaux violet	Silver grey
RAL-No.	5019	4004	7001



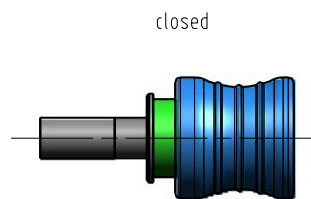
SCALE 1:1



SCALE 2:1



SCALE 2:1



SCALE 2:1

Fuer Kabel /
For cable

Gr. Type	ØD1 max.	ØD2 max.	ØD3 max.	ØD4 max.	ØD5	ØD6	ØD7	ØD8	Crimp		
									Aussen/out	Innen/in	
1											
2	RG 174 BU;RG 316 U;	2,80	2,20	1,67	0,54	1,62	2,60	3,20	3,80	3,25	Löten/solder
3											
4											
5	RG 316 U-d;	3,10	2,50	1,55	0,54	1,65	2,60	3,60	4,30	3,65	Löten/solder

IMS CONNECTOR SYSTEMS

general tolerance
ISO 2768
mH

scale: 5:1

Assembly instruction: M-185
Stripping dimension:

date 28.06.13
name Schwäer
generate checked Norm 059972

QLS(m)-Kabelstecker
QLS(m)-Cable mount plug

design nr. a rev. Change acc. sim. alteration 13.08.13 date RSch name

5101.QLS.1X10.0''

Colour code

Rev. a