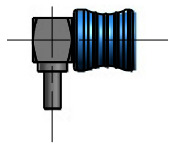
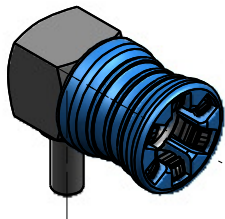
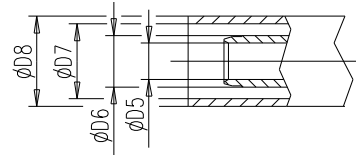
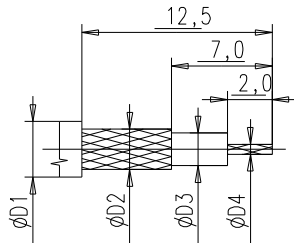


Colour code X	C	D	G
Colour	Capri blue	Bordeaux violet	Silver grey
RAL-No.	5019	4004	7001



SCALE 1:1

Kabelzuschnitt
Stripping dimension



SCALE 2:1

Fuer Kabel /
For cable

Gr.	Type	$\phi D1$ max.	$\phi D2$ max.	$\phi D3$ max.	$\phi D4$ max.	$\phi D5$	$\phi D6$	$\phi D7$	$\phi D8$	Crimp Aussen/out	Crimp Innen/in
1	RG 178 BU;RG 196 AU;	2,10	1,30	0,90	0,30	0,92	1,70	2,25	3,20	2,67	löten/ solder
2	RG 174 BU;RG 316 U;	2,80	2,20	1,67	0,54	1,62	2,60	3,20	3,80	3,25	löten/ solder
3											
4											
5	RG 316 U-d;	3,10	2,50	1,55	0,54	1,62	2,60	3,60	4,30	3,65	löten/ solder

		general tolerance ISO 2768 mH		scale: 5:1	
		date	name	QLS(m)-Kabelwinkelstecker QLS(m)-Cable mount angle plug	
generate	04.07.13	Schwaer			
checked					
Norm		059993		5103.QLS.1X20.0''	
design	a	Change acc. sim.	20.08.13		
nr.	rev.	alteration	date	name	a