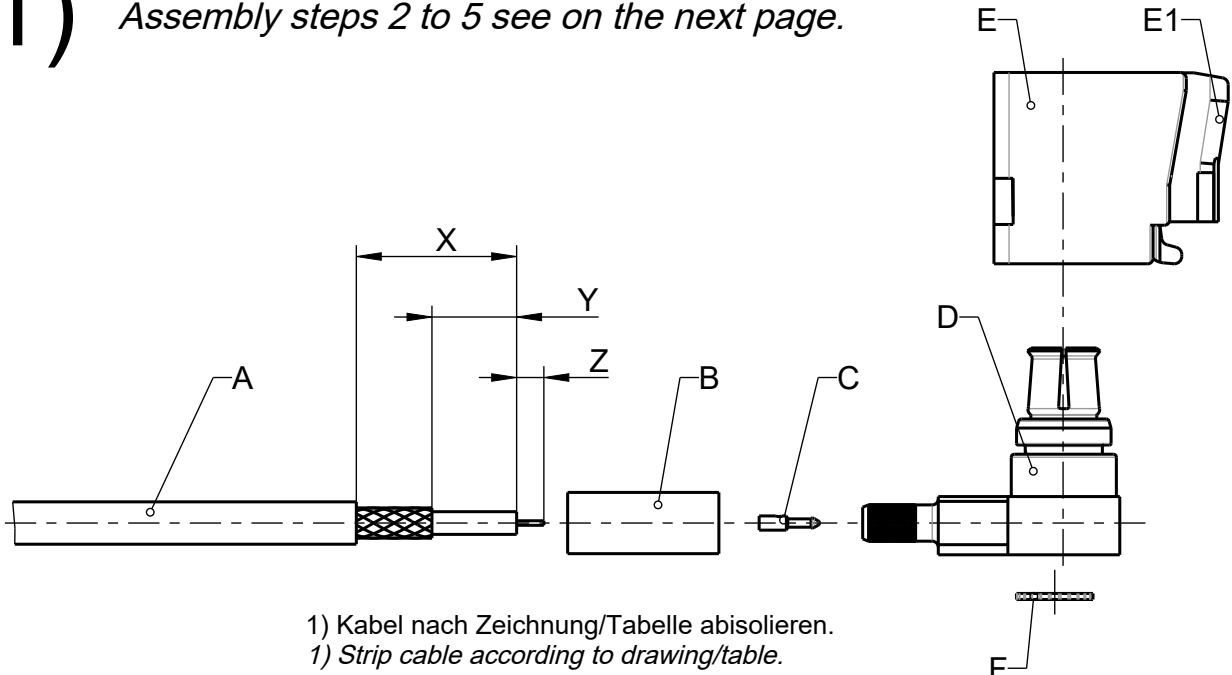


(1)

Montageschritte 2 bis 5 siehe naechste Seite.  
 Assembly steps 2 to 5 see on the next page.



1) Kabel nach Zeichnung/Tabelle abisolieren.  
 1) Strip cable according to drawing/table.

\* Kodierung und Oberflaechen siehe Datenblatt.  
 \* Surface and coding vide technical data sheet.  
 \*\* Crimpbacke fuer Innenleiter  
 \*\* Crimp die for center contact  
 \*\*\* Crimpbacke fuer Aussenleiter  
 \*\*\* Crimp die for outer contact

1\* Empfohlenes Werkzeugmass  
 1\* recommended crimping tool dimension

		X	Y	Z	Crimpdie	Outerdim. 1*	Innerdim. 1*
59K25H-1AGXX-Y*	RG 58 RG 174/ RG 316	13.1 <sup>+0.2</sup> <sub>-0.2</sub>	6.4 <sup>+0.2</sup> <sub>-0.2</sub>	1.7 <sup>+0.2</sup> <sub>-0.2</sub>	11W150-402** 11W150-508***	hex.:5.5 <sub>-0.05</sub>	□ 0.73 <sub>-0.03</sub>
59K25H-1E4XX-Y*	G & G 69337	13.1 <sup>+0.2</sup> <sub>-0.2</sub>	6.4 <sup>+0.2</sup> <sub>-0.2</sub>	1.7 <sup>+0.2</sup> <sub>-0.2</sub>	11W15F-5E4	hex.:5.5 <sub>-0.05</sub>	□ 1.3 <sub>-0.03</sub>
59K25H-1E4XX-Y*	LEONI Dacar 037; Draka FL09YBCYW 1,1/2,9 DKB	13.1 <sup>+0.2</sup> <sub>-0.2</sub>	6.4 <sup>+0.2</sup> <sub>-0.2</sub>	1.7 <sup>+0.2</sup> <sub>-0.2</sub>	11W15F-5E4	hex.:5.5 <sub>-0.05</sub>	□ 1.3 <sub>-0.03</sub>
59K25H-110XX-Y*	RG62	7.5 <sup>+0.2</sup> <sub>-0.2</sub>	1 <sup>+0.2</sup> <sub>-0.2</sub>	1.7 <sup>+0.2</sup> <sub>-0.2</sub>	11W150-509	hex.:6.5 <sub>-0.05</sub>	□1.1 <sub>-0.03</sub>
59K25K-1E4XX-Y*	LEONI Dacar 037; Draka FL09YBCYW 1,1/2,9 DKB	12.2 <sup>+0.2</sup> <sub>-0.2</sub>	5.5 <sup>+0.2</sup> <sub>-0.2</sub>	1.7 <sup>+0.2</sup> <sub>-0.2</sub>	11W15S-5E4	hex.:5.5 <sub>-0.05</sub>	□ 1.3 <sub>-0.03</sub>
59K25C-1M4XX-Y* 59K25H-1M4XX-Y*	(s00) Dacar 302 Dacar 302-3 Dacar 302-4	11.6 <sup>+0.2</sup> <sub>-0.2</sub>	6.4 <sup>+0.2</sup> <sub>-0.2</sub>	1.7 <sup>+0.2</sup> <sub>-0.2</sub>	11W150-504	hex.:4.3 <sub>-0.05</sub>	□ 1.1 <sub>-0.03</sub>
59K25C-106XX-Y* 59K25H-106XX-Y*	RG58	13.1 <sup>+0.2</sup> <sub>-0.2</sub>	6.4 <sup>+0.2</sup> <sub>-0.2</sub>	1.7 <sup>+0.2</sup> <sub>-0.2</sub>	11W150-508	hex.:5.5 <sub>-0.05</sub>	□ 1.1 <sub>-0.03</sub>
59K25H-103XX-Y*	RG 179 B/U-d 1.5 DS	11.2 <sup>+0.2</sup> <sub>-0.2</sub>	6.0 <sup>+0.2</sup> <sub>-0.2</sub>	1.7 <sup>+0.2</sup> <sub>-0.2</sub>	11W150-402** 11W15B-503***	hex.:3.3 <sub>-0.03</sub>	□ 0.73 <sub>-0.03</sub>
59K25C-102XX-Y* 59K25H-102XX-Y*	RG 174 RG 316	11.2 <sup>+0.2</sup> <sub>-0.2</sub>	6.0 <sup>+0.2</sup> <sub>-0.2</sub>	1.7 <sup>+0.2</sup> <sub>-0.2</sub>	11W150-402	hex.:3.3 <sub>-0.03</sub>	□ 0.73 <sub>-0.03</sub>
59K25C-1K4XX-Y*	Z7S MD 227035	13.1 <sup>+0.2</sup> <sub>-0.2</sub>	6.4 <sup>+0.2</sup> <sub>-0.2</sub>	1.7 <sup>+0.2</sup> <sub>-0.2</sub>	11W150-508	hex.:5.5 <sub>-0.05</sub>	□ 1.1 <sub>-0.03</sub>
Coax-Insert	Cabel	X	Y	Z	Crimpdie	Outerdim. 1*	Innerdim. 1*

**Rosenberger**

general tolerance  
 ISO 2768  
 mH  
 assembly instr.:  
 ---  
 panel piercing:  
 ---

scale: 2:1 (1:1)  
 series: ---  
 ---

crimp insert: ---  
 cable: ---  
 ---

vertraulich / confidential

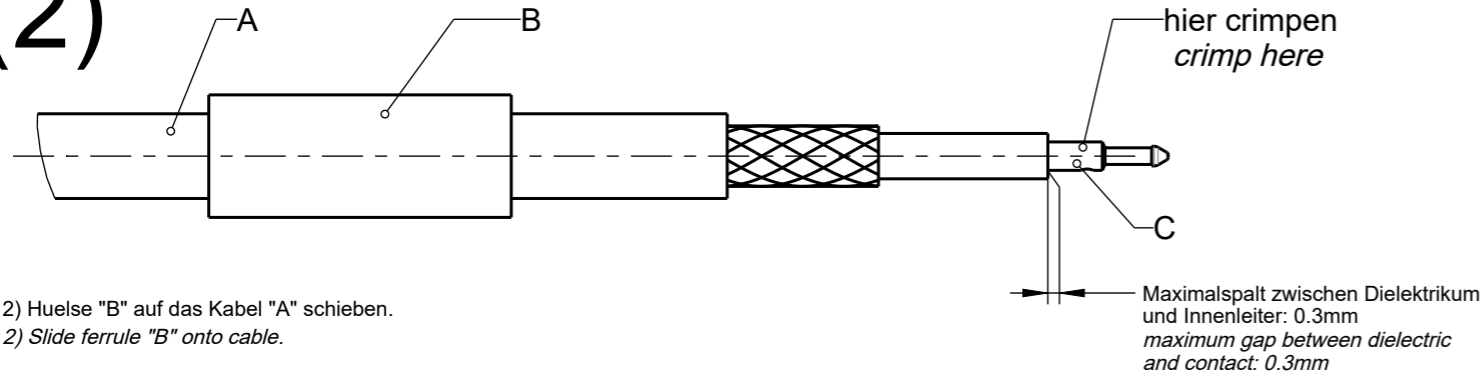
	date	name
drawn	02.08.2005	T_Oberschelp
check	20.12.2022	F_Zehentmeie
appr.	21.12.2022	F_Danzl

title:  
**Montageanleitung  
 assembly instruction**

rev.	change-no	name	date
s00	22-1754	J_Dandl	20.12.2022
r00	14-1556	T_Koschel	27.10.2014
q00	14-0039	N_Naus	09.01.2014
p00	13-1291	M2_Mueller	14.11.2013
o00	13-0637	M_Kotewitz	17.06.2013
n00	13-s066	M_Kotewitz	22.05.2013

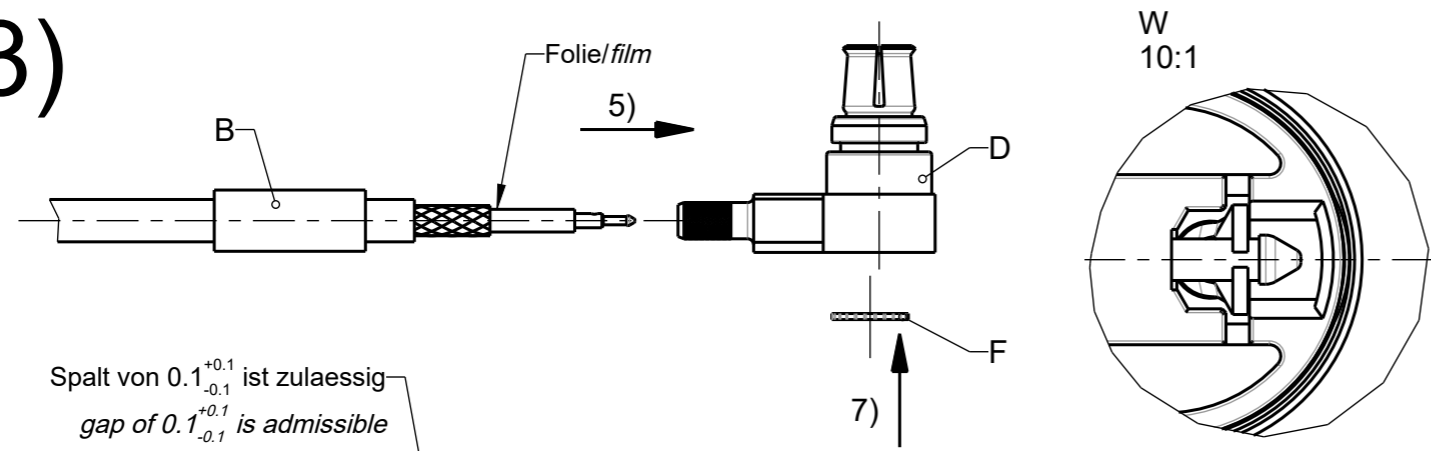
drawing-no.:  
**MA\_59V065**  
 sheet:  
 1  
 of: 3

(2)

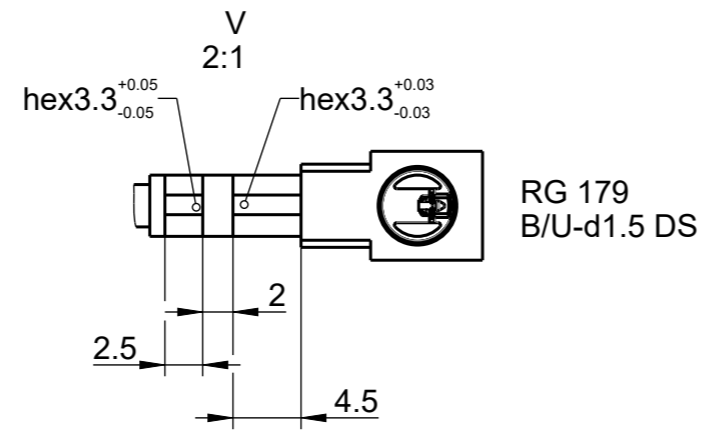


- 2) Hülse "B" auf das Kabel "A" schieben.  
2) Slide ferrule "B" onto cable.
- 3) Innenleiter "C" auf den Kabelinnenleiter bis an das Dielektrikum heranschieben und crimpen.  
3) Push center pin "C" on the inner conductor of the cable up to the dielectric and crimp it.
- 4) Auf max. mögliche Geradheit bei Pigtail Innenleiter zu Dielektrikum achten.  
4) Pay attention to best possible straightness of pigtail insulator to dielectric.

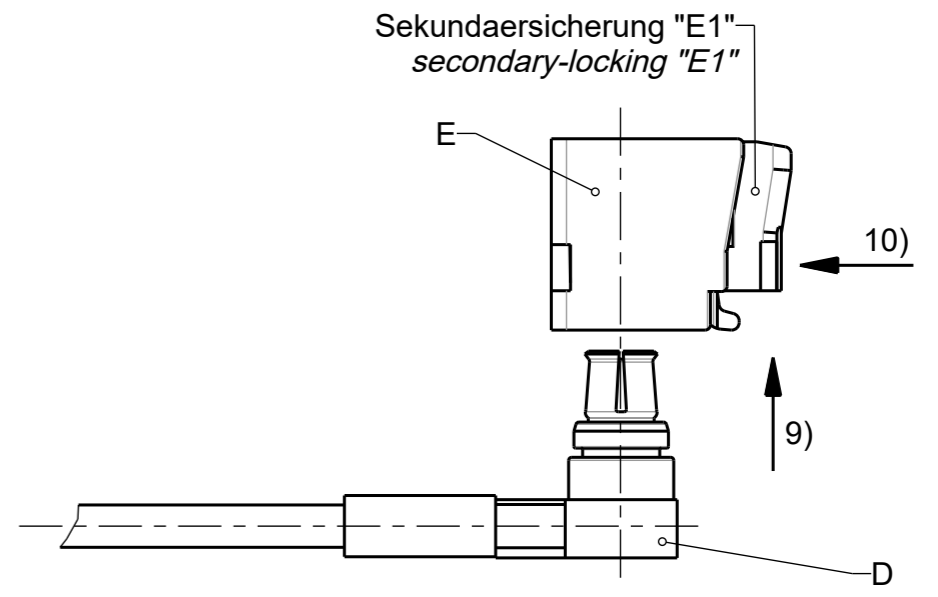
(3)



- 5) Geflecht aufweiten  
Bei Kabelgruppe E4: Pigtail Innenleiter "C" während des Aufweiten nicht verbiegen.  
5) Splay out the braid  
At cable group E4: don't bend the pigtail contact "C" during expanding.
- 6) Kabelende in den Steckerkoerper "D" einschieben, bis Innenleiter spuerbar einrastet (Spitze des Kontaktes muss gut sichtbar ueber den Mittelkontakt hinausragen).  
6) Insert the cable into the connector body "D" until the centerpin engages perceptible (Top of the contact must visibly protrude through the centre contact).
- 7) Crimphülse "B" ueber das Geflecht bis an den Steckerkoerper heranschieben und moeglichst nahe am Steckerkoerper festcrimpen.  
7) Slide ferrule "B" over the braid up to the connector body and as close to the connector body as possible.
- 8) Oeffnung mit Deckel "F" verschließen. (buendig mit Aussenleiter verpresst.)  
8) Press cover "F" into the rear opening of the connector body. (justified pressed in outer contact.)
- 9) Auflageflaeche fuer die Verpressung des Deckels.  
9) Base for to press the cap.

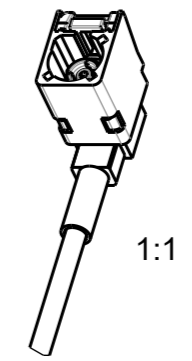


(4)



- 10) Steckerkoerper "D" mit angecrimpten Kabel in Gehaeuse "E" einfuehren, bis Kontakt spuerbar einrastet.  
10) Push in the connector body "D" with cable in the shell body "E" until the insert engages perceptibly.
- 11) Sekundaersicherung "E1" vollstaendig bis zur spuerbaren Verrastung eindruecken.  
11) Secondary-locking "E1" has to push-in completely until stop.

(5)



Darstellung zeigt montierten Zustand.  
Drawing shows connector fully assembled.

Rosenberger

general tolerance	ISO 2768 mH	assembly instr.:	scale: 2:1 (1:1)	crimp insert: ---	
		panel piercing: ---	series: ---	cable: ---	
date		name	title: Montageanleitung assembly instruction		
drawn	02.08.2005	T_Oberschelp	drawing-no.: MA_59V065		
check.	20.12.2022	F_Zehentmeie			sheet: 2
appr.	21.12.2022	F_Danzl			of: 3
rev.	change-no	name			date

1

2

3

4

Revision

Change

s00

added Dacar 302, Dacar 302-3, Dacar 302-4  
 removed RTK 031

A

A

B

B

C

C

D

D

E

E

Darstellung zeigt montierten Zustand.  
 Drawing shows connector fully assembled.

**Rosenberger**

general tolerance  
 ISO 2768  
 mH

assembly instr.:  
 ---  
 panel piercing:  
 ---

scale: 2:1 (1:1)  
 series: ---  
 ---

crimp insert: ---  
 cable: ---  
 ---

**vertraulich / confidential**

rev.	change-no	name	date
s00	22-1754	J_Dandl	20.12.2022
r00	14-1556	T_Koschel	27.10.2014
q00	14-0039	N_Naus	09.01.2014
p00	13-1291	M2_Mueller	14.11.2013
o00	13-0637	M_Kotewitz	17.06.2013
n00	13-s066	M_Kotewitz	22.05.2013

	date	name
drawn	02.08.2005	T_Oberschelp
check.	20.12.2022	F_Zehentmeie
appr.	21.12.2022	F_Danzl

title: **Montageanleitung  
 assembly instruction**

drawing-no.: **MA\_59V065** sheet: **3**  
 of: **3**

F

F

1

2

3

4