

# Assembly instruction

Series MMBX

AC 28.06.00  
4540/PM

No.27351

## Tools and materials required:

Stanley blade  
Scissors  
Crimp tool (see table below)

Straight connectors for flexible cable

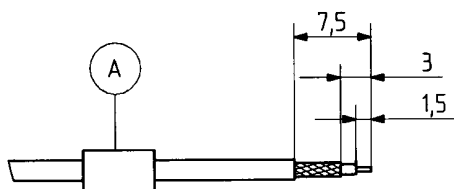
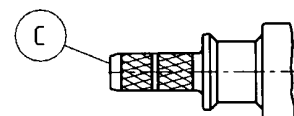
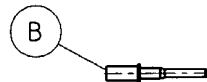
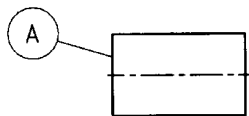
Cable entry: crimped

Connector types: (e.g.)

11 MMBX-50-2-1

11 MMBX-50-2-2

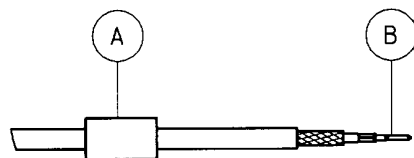
|                                       |                       |               |                       |
|---------------------------------------|-----------------------|---------------|-----------------------|
| This connector is supplied in 3 parts | Suitable cables e.g.: | RG 316 B/U    | K 02252 D<br>EF 316 D |
|                                       | Centre contact:       | cavity 1      | cavity 1              |
|                                       | Braid:                | cavity A      | cavity A              |
|                                       | Crimp tool:           | 1, 2, A (red) | 1, 2, A (red)         |



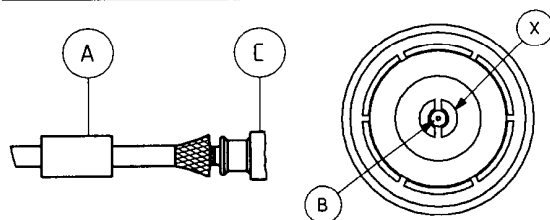
Slide ferrule A onto cable.

Prepare cable according to diagram.

CAUTION: Do not damage braid, dielectric and inner conductor of cable!



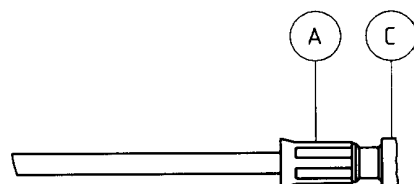
Push contact B over inner conductor of cable to about cable-dielectric and crimp with insert 1.



Splay out braid and insert cable in connector body C.

Check: Inner centre contact B have to be in the jack.

Ensure that braid lies above the crimp neck.



Slide ferrule A over braid and crimp

as close to connector body C as possible.

SUHNER's skilled staff and specialised equipment are available to carry out complete R.F. lead-assembly on your behalf.  
We mount your connectors on cables at economic prices! Please contact our representative for further details of this service.



HUBER + SUHNER AG CH-9100 HERISAU

Deutscher Text: siehe Rückseite